

Colonial

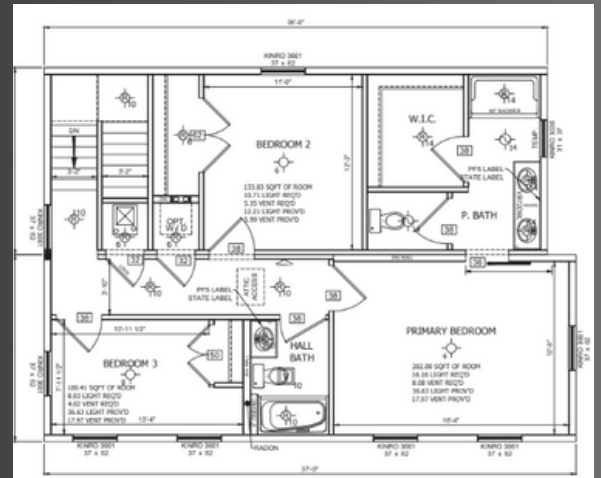
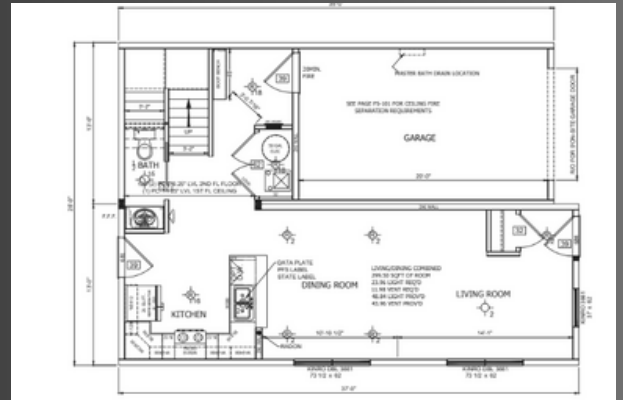
The Canterbury-

Spacious Two-Story Living with Modern Comforts

This 1,612 sq. ft. two-story home offers the perfect blend of style, efficiency, and convenience. With 3 bedrooms and 2.5 baths, all bedrooms are located upstairs for privacy, including a primary suite with a walk-in closet and full bathroom.

The open floor plan on the main level connects the kitchen, dining, and living areas into one bright, welcoming space—perfect for both entertaining and everyday living. Energy-efficient appliances are included, helping you save on utilities while enjoying modern convenience. A 4-foot crawl space adds accessible storage, and the one-car attached garage provides secure parking and easy entry.

Thoughtfully designed for comfort and functionality, this home is move-in ready and located in a community you'll love calling home.



PETERS GROVE

Ranch

The Willow-

PETERS GROVE

Ranch-Style Comfort in a Walkable Neighborhood

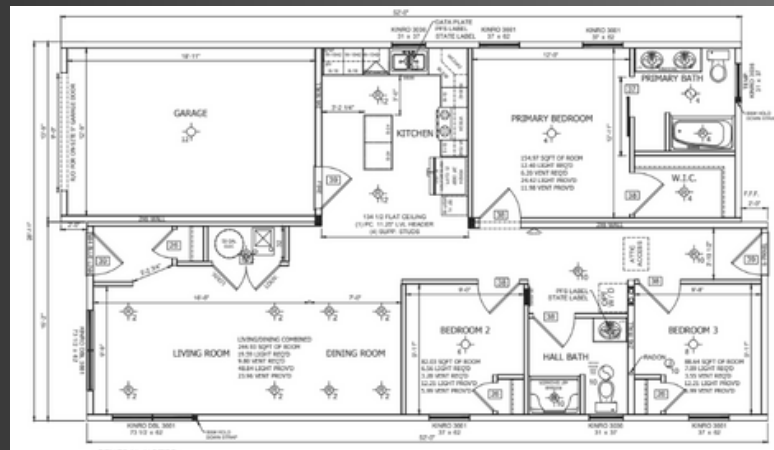
Experience easy living in this 1,247 sq. ft. ranch-style home featuring 3 bedrooms, 2 full baths, and a spacious primary suite with private bath. The open-concept design offers two versatile floor plan options to fit your lifestyle:

Plan 1: Bedrooms toward the front of the home, with the living room opening to the backyard for a seamless indoor-outdoor connection.

This home includes a 4-foot crawl space for accessible storage, a one-car attached garage, and energy-efficient appliances that keep utility costs low. Enjoy your backyard for relaxing or entertaining, all in a walkable neighborhood close to parks, shops, and local amenities. Move-in ready and thoughtfully designed, this home blends comfort, efficiency, and location.

Coming Soon!

Model Q-32287
Three Bed | Two Bath | 1,247 Sq. Ft.



Reverse Ranch

The Meadowbrook-

PETERS GROVE

Ranch-Style Comfort in a Walkable Neighborhood

Experience easy living in this 1,247 sq. ft. ranch-style home featuring 3 bedrooms, 2 full baths, and a spacious primary suite with private bath. The open-concept design offers two versatile floor plan options to fit your lifestyle:

Plan 2: Living room at the front, with bedrooms in the back for added privacy.

This home includes a 4-foot crawl space for accessible storage, a one-car attached garage, and energy-efficient appliances that keep utility costs low. Enjoy your backyard for relaxing or entertaining, all in a walkable neighborhood close to parks, shops, and local amenities.

Move-in ready and thoughtfully designed, this home blends comfort, efficiency, and location

Coming Soon!

Model Q-32287

Three Bed | Two Bath | 1,247 Sq. Ft.

